

# ATW SMART-TRAWLING

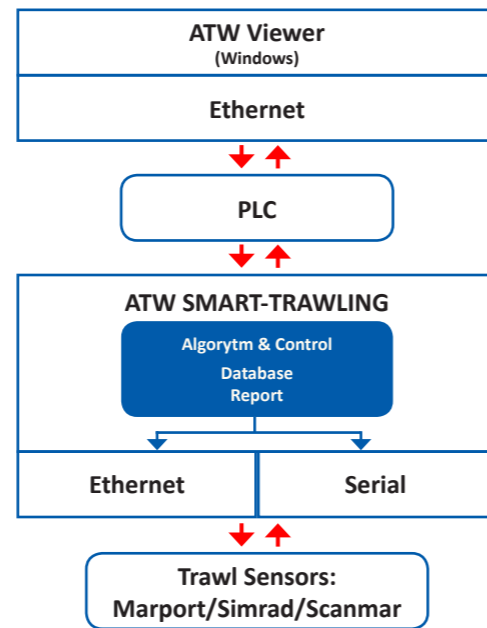
## NEW GENERATION

ATW SMART-TRAWLING is a new generation add on to our ATW Trawl winch system. It is designed for all trawlers, **regardless of whether they have electrical or hydraulic trawl winches.**

The system connects to the vessels Trawl sensor system and uses information from the Trawl sensor/Headline sensor and door sensors to improve the trawls catching efficiency.

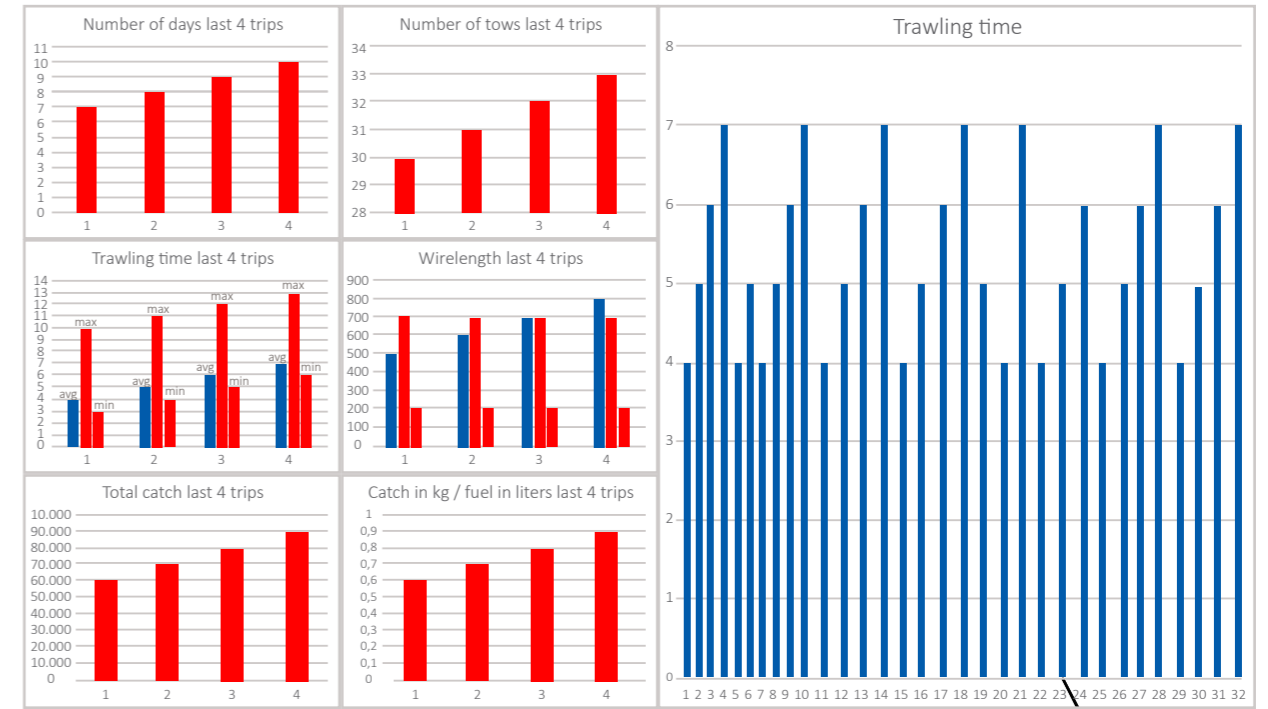
ATW SMART-TRAWLING also connects to various other systems in the vessel and utilizes information regarding depth, wind speed, wave height, speed, heading and movement of the vessel. The system is based on algorithms and pattern analysis based on the data accumulated in the systems database and uses this information to regulate the fishing gears behavior. For example if the ship turns to starboard, the portside winch slowly begins to pay out wire to maintain equal tension on both trawl wires.

With ATW SMART-TRAWLING, the position and opening of the trawl can be kept quite accurate using the signals from the trawl sensors. The system controls the torque and speed of the winches and pays out or hauls in wire as appropriate. The trawl is thus always kept in the best possible location with the maximum catching efficiency depending on numerous factors.



The system utilizes fishing gear sensors and a motion sensor on board to control the location of the trawl along with data collection in a database for later processing and analyses.

Managers and ship owners receive reports on each tow and the whole fishing trip in order to compare the last fishing trips. Also, information concerning maintenance of the trawl winch system will be available such as working hours, usage and tension of the wire.



Example of customized report

