

AutoGen

Power Management System

Increased Propulsion Power - Take Home Facility
Less Maintenance - Less Oil Consumption



AutoGen - Power Management System



The AutoGen Power Management System from Naust Marine is an automatic electrical load sharing system meant to increase propulsion power, reduce oil consumption and maintenance cost.

The AutoGen system is suitable for upgrading older fishing vessels, with small main engines, which otherwise could not benefit from the newest fishing technology - like Naust Marine's ATW system.

The AutoGen system prevents extreme load on individual engines by automatic load sharing, automatically starting and stopping generators according to demand and supply of electrical power.

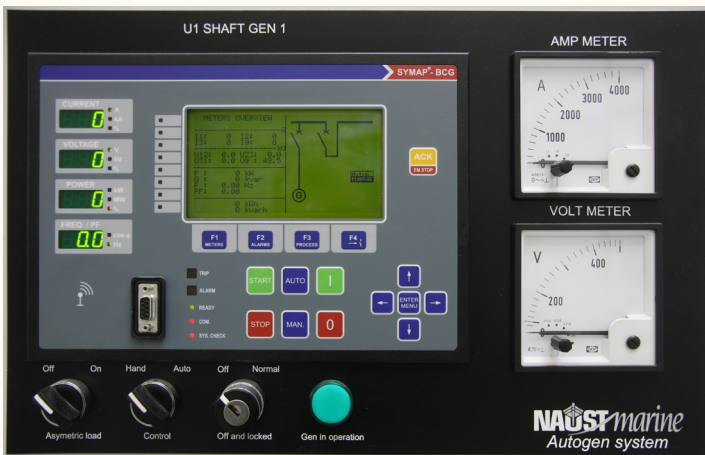
With extra equipment the AutoGen may be used as an alternative facility to a broken main engine, transferring auxiliary power to the propeller through the shaft generator.

A special AutoGen control panel is used to choose between settings for the shaft generator and load distribution on generators.

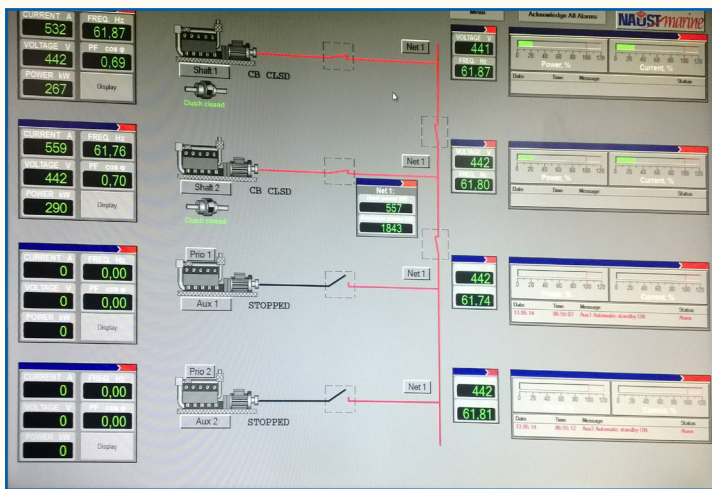
The AutoGen system is delivered with a control monitor (HMI). This is convenient for systems with many generators.

The main component of the AutoGen system is the SYMAP unit, which controls each generator and links it to the other SYMAP units for smooth synchronous control of the main system, protecting generators and engines.

The system is also equipped with a Power Management System from Naust Marine, controlling the main power system of the ship.



Three different modes of operation can be selected from the AutoGen control panel for the shaft generator:



Mode A:

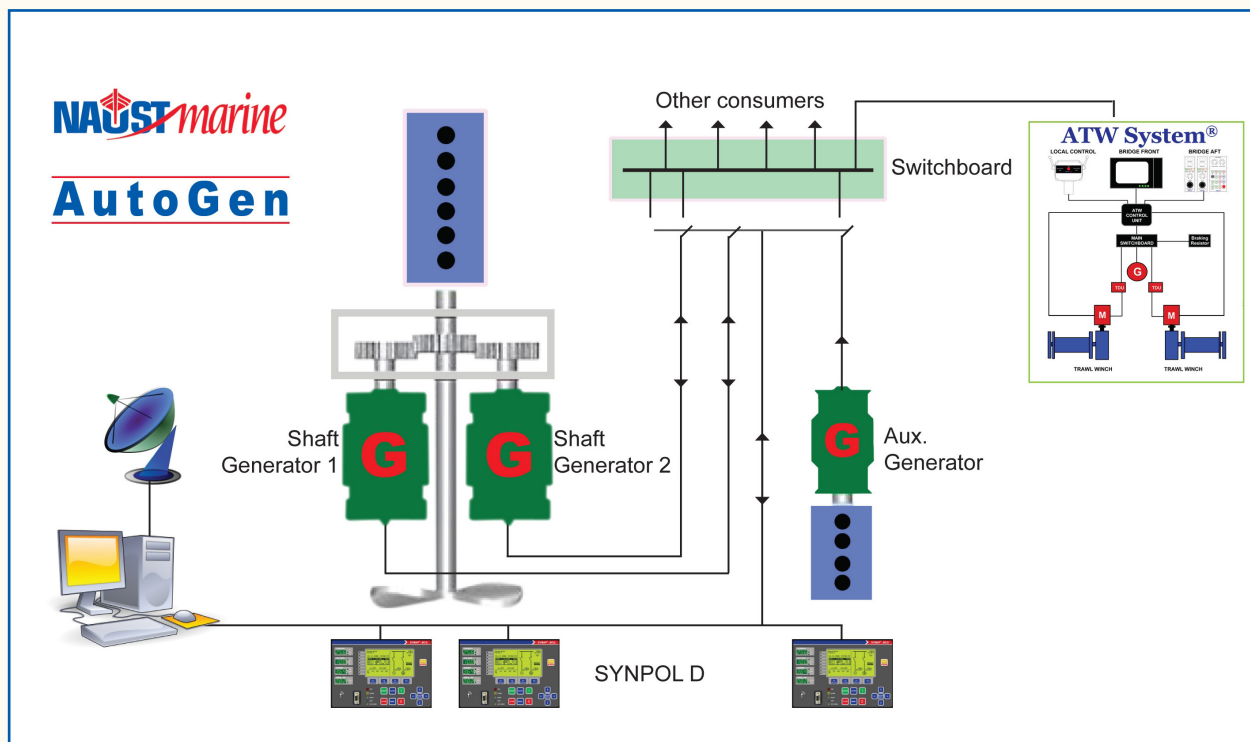
Symmetric Load Sharing.
Both/all generators run at the same percentage of their rated power.

Mode B:

Asymmetric Load Sharing.
Each generator runs at a preset percentage of its rated power.

Mode C:

Asymmetric Diesel-Electric Sharing. Each generator runs at a preset percentage of its rated power. A certain percentage of the shaft generator's power is defined as available for powering propulsion. The shaft generator can therefore run as a motor, increasing the propulsion power of the vessel.



Reliable Winch Controls

- The complete package

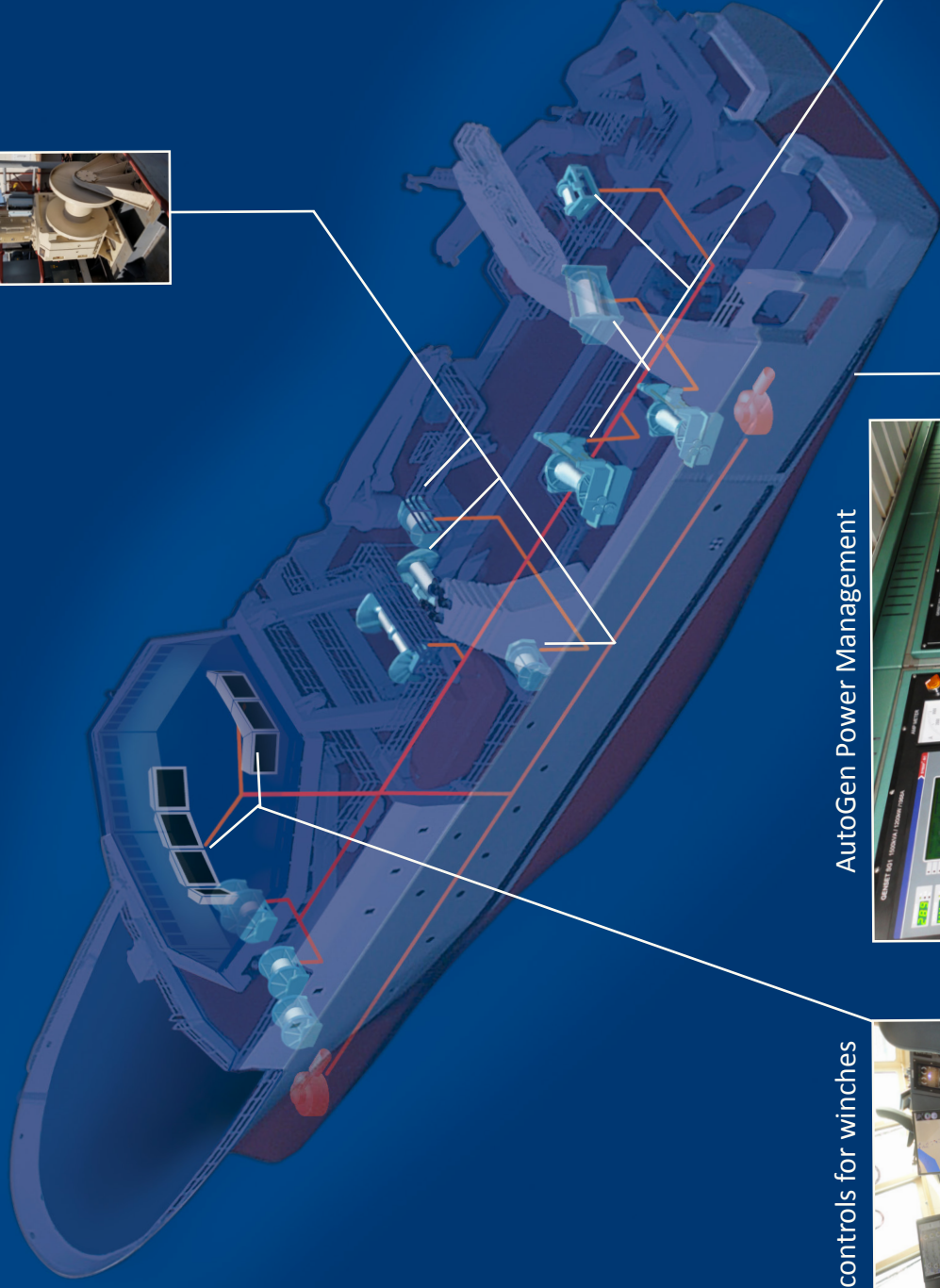
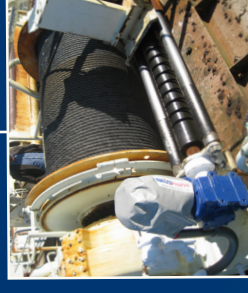
Trawl Winches



Auxiliary Winches



Electric Level Wind



ATW - Bridge controls for winches



AutoGen Power Management

